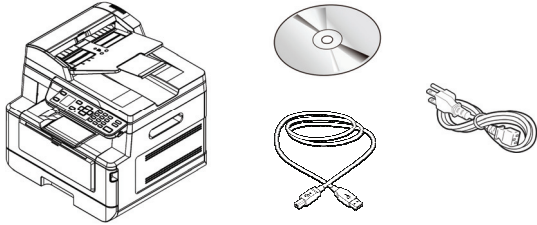
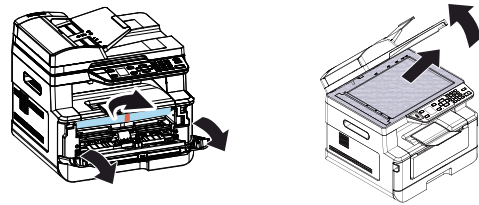




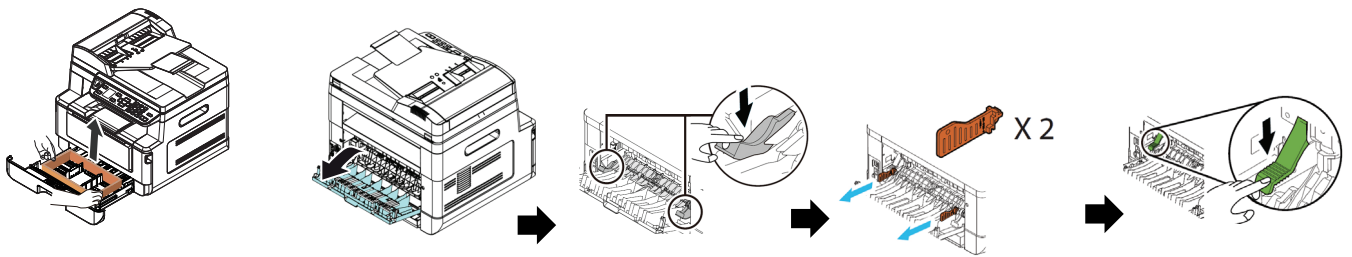
1 包装内容



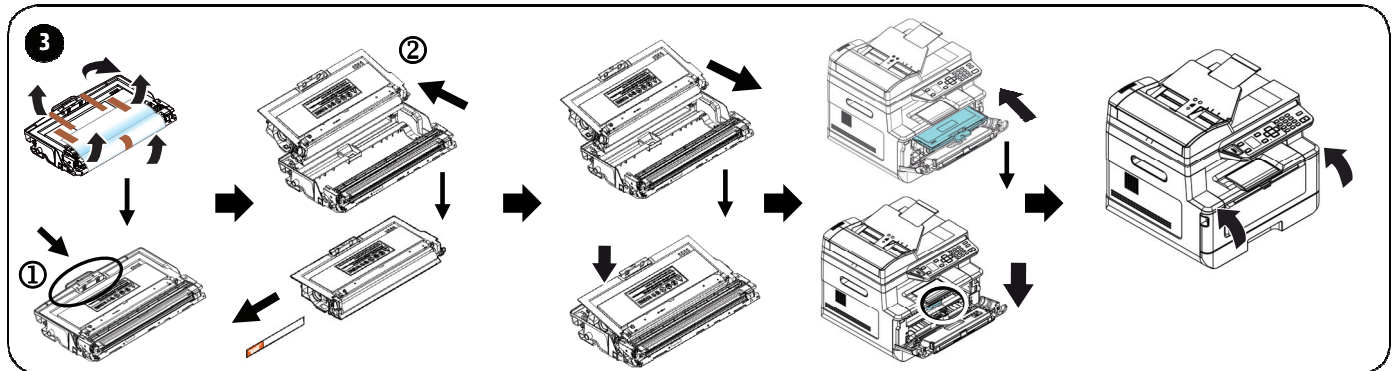
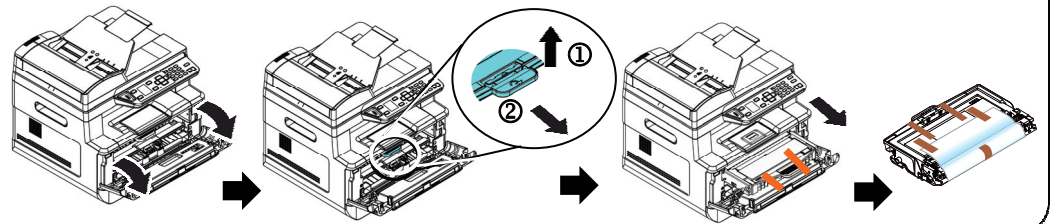
2 移除包装材料



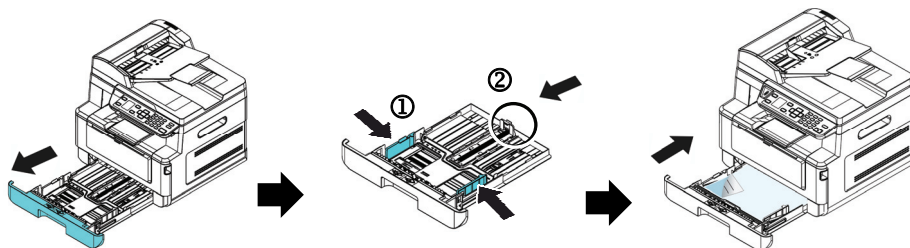
2 移除包装材料、垫片



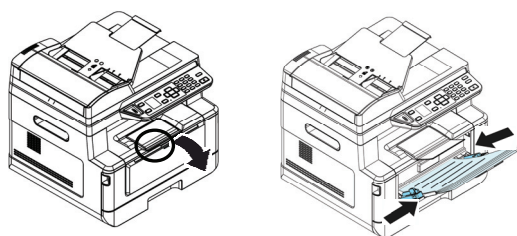
3 移除墨粉盒与硒鼓的红胶、保护膜、与封条



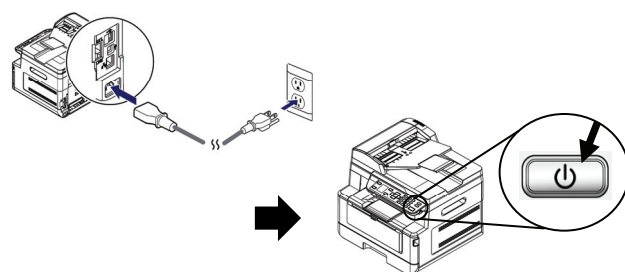
4 将纸张装入主要纸盒



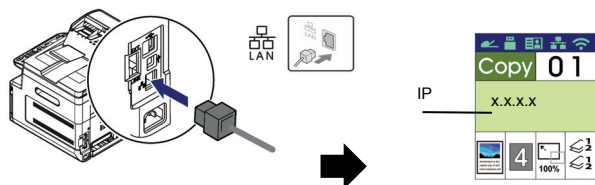
5 将纸张装入手动纸盒



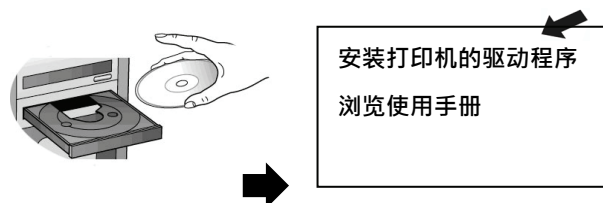
6 连接电源并开启电源



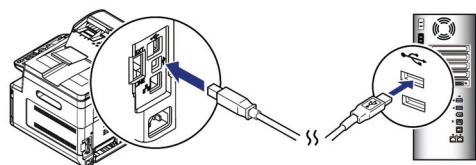
7 通过网络连接计算机



8 安装打印机的驱动程序



9 通过 USB 端口连接计算机



! 更多操作的细节，请参考光盘内的使用手册。

